

ATHINAI/ELEFTHERIOS VENIZELOS

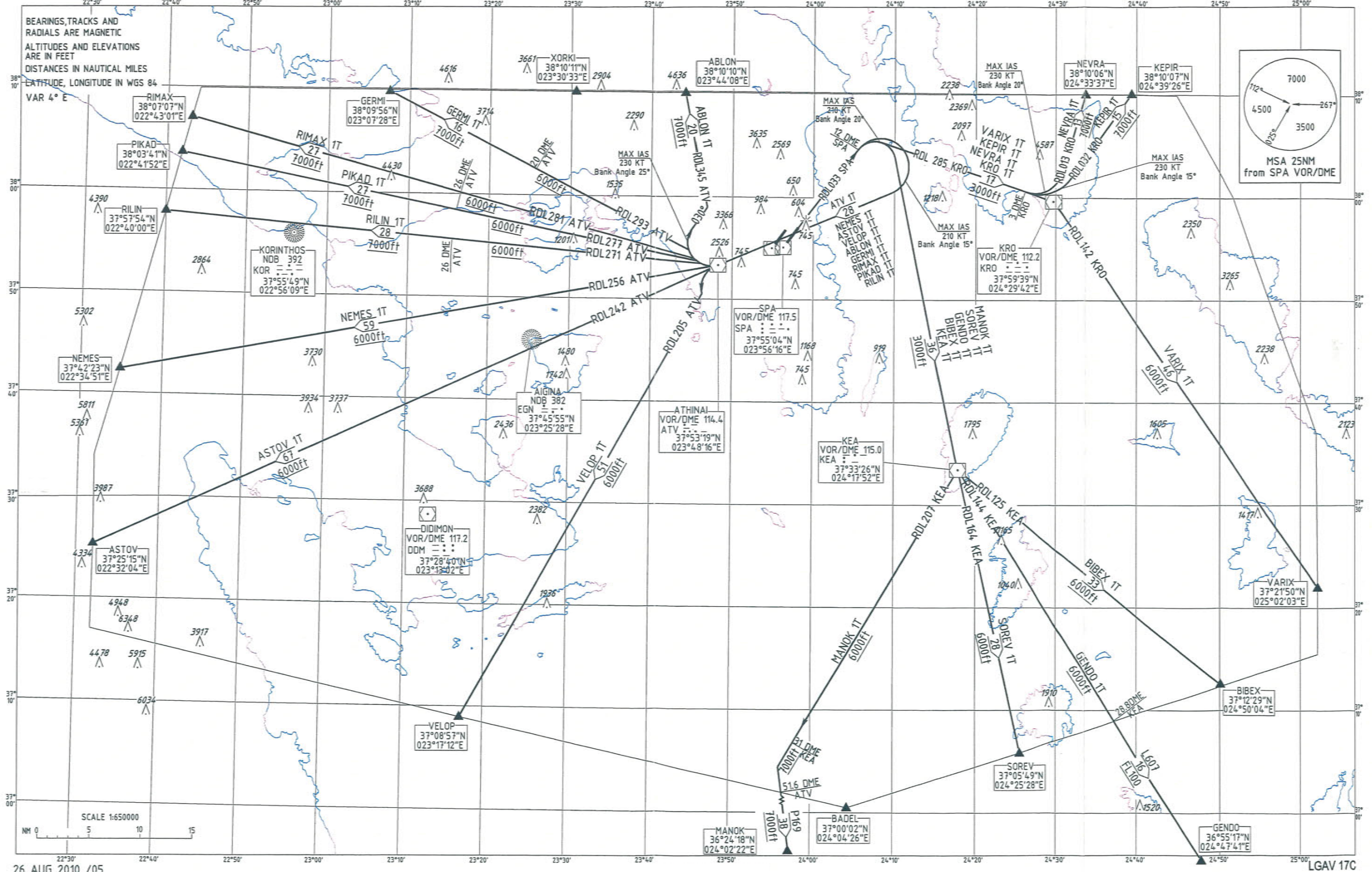
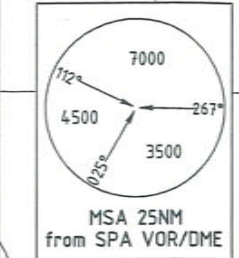
STANDARD DEPARTURE CHART -
INSTRUMENT (SID) - ICAO

TRANSITION ALTITUDE
9000ft

ATIS 136.125

TWR 136.275 118.625
APP 128.950
ACC 134.150 125.200 134.325 133.725

SUPPLEMENTARY SIDs RILIN 1T PIKAD 1T RIMAX 1T GERMI 1T ABLON 1T ATV 1T
KRO 1T NEVRA 1T KEPIR 1T VARIX 1T
KEA 1T BIBEX 1T GENDO 1T SOREV 1T MANOK 1T
VELOP 1T ASTOV 1T NEMES 1T



GENERAL When for these SIDs an altitude higher than the transition altitude is designated, then the ATC unit shall specify an equivalent Flight Level.

DESIGNATOR	DESCRIPTION	MAX IAS / BANK ANGLE	MINIMUM CLIMB GRADIENT (PDG)	ALTITUDES
NEVRA 1T	Climb on RADIAL 033 SPA. At RADIAL 033 SPA / 12 DME Fix turn right, intercept and follow RADIAL 285 KRO. At RADIAL 285 KRO / 3 DME Fix turn left, intercept and follow RADIAL 013 KRO, proceed to NEVRA and join AWY G33 or Z507.	210 KT/20° until turn at RADIAL 033 SPA/12 DME Fix is completed. 230 KT/20° until turn at RADIAL 285 KRO/3 DME Fix is completed.	5,0% (304 FT/NM) up to 3000FT (QNH) then 3,9% (237 FT/NM) up to 10000FT (QNH).	Cross R 033 SPA/12 DME Fix at 3000FT (QNH) or above. Cross R 285 KRO/3 DME Fix at 7000FT (QNH) or above. Cross NEVRA at 10000FT (QNH) or above.
KEPIR 1T	Climb on RADIAL 033 SPA. At RADIAL 033 SPA / 12 DME Fix turn right, intercept and follow RADIAL 285 KRO. At RADIAL 285 KRO / 3 DME Fix turn left, intercept and follow RADIAL 032 KRO, proceed to KEPIR and join AWY G8.	210 KT/20° until turn at RADIAL 033 SPA/12 DME Fix is completed. 230 KT/15° until turn at RADIAL 285 KRO /3 DME Fix is completed.	5,0% (304 FT/NM) up to 3000FT (QNH) then 3,9% (237 FT/NM) up to 8000FT (QNH).	Cross R 033 SPA/12 DME Fix at 3000FT (QNH) or above. Cross R 285 KRO/3 DME Fix at 7000FT (QNH) or above. Cross KEPIR at 8000FT (QNH) or above.
VARIX 1T	Climb on RADIAL 033 SPA. At RADIAL 033 SPA / 12 DME Fix turn right, intercept and follow RADIAL 285 KRO and proceed to KRO. After KRO turn right, intercept and follow RADIAL 142 KRO, proceed to VARIX and join AWY L995.	210 KT/20° until turn at RADIAL 033 SPA/12 DME Fix is completed.	5,0% (304 FT/NM) up to 3000FT (QNH) then 3,9% (237 FT/NM) up to 6000FT (QNH).	Cross R 033 SPA/12 DME Fix at 3000FT (QNH) or above. Cross KRO at 6000FT (QNH) or above.
KRO 1T	Climb on RADIAL 033 SPA. At RADIAL 033 SPA / 12 DME Fix turn right, intercept and follow RADIAL 285 KRO, proceed to KRO and then as directed by ATC.	210 KT/20° until turn at RADIAL 033 SPA/12 DME Fix is completed.	6,4% (389 FT/NM) up to 11000FT (QNH).	Cross R 033 SPA/12 DME Fix at 4000FT (QNH) or above. Cross KRO at 11000FT (QNH) or above.
BIBEX 1T	Climb on RADIAL 033 SPA. At RADIAL 033 SPA / 12 DME Fix turn right and proceed to KEA. After KEA turn left, intercept and follow RADIAL 125 KEA and proceed to BIBEX.	210 KT/20° until turn at RADIAL 033 SPA/12 DME Fix is completed.	5,0% (304 FT/NM) up to 3000FT (QNH).	Cross R 033 SPA/12 DME Fix at 3000FT (QNH) or above. Cross KEA at 6000FT (QNH) or above.
GENDO 1T	Climb on RADIAL 033 SPA. At RADIAL 033 SPA / 12 DME Fix turn right and proceed to KEA. After KEA turn left, intercept and follow RADIAL 144 KEA, join AWY L607 and proceed to GENDO.	210 KT/20° until turn at RADIAL 033 SPA/12 DME Fix is completed.	5,0% (304 FT/NM) up to 3000FT (QNH).	Cross R 033 SPA/12 DME Fix at 3000FT (QNH) or above. Cross KEA at 6000FT (QNH) or above.
SOREV 1T	Climb on RADIAL 033 SPA. At RADIAL 033 SPA / 12 DME Fix turn right and proceed to KEA. After KEA intercept and follow RADIAL 164 KEA, proceed to SOREV and join AWY A10.	210 KT/20° until turn at RADIAL 033 SPA/12 DME Fix is completed.	5,0% (304 FT/NM) up to 3000FT (QNH).	Cross R 033 SPA/12 DME Fix at 3000FT (QNH) or above. Cross KEA at 6000FT (QNH) or above. Cross SOREV at 7000FT (QNH) or above.
MANOK 1T	Climb on RADIAL 033 SPA. At RADIAL 033 SPA / 12 DME Fix turn right and proceed to KEA. After KEA turn right, intercept and follow RADIAL 207 KEA, join AWY P169 and proceed to MANOK.	210 KT/20° until turn at RADIAL 033 SPA/12 DME Fix is completed.	5,0% (304 FT/NM) up to 3000FT (QNH).	Cross R 033 SPA/12 DME Fix at 3000FT (QNH) or above. Cross KEA at 6000FT (QNH) or above. Cross R 207 KEA/31 DME at 7000FT (QNH) or above.
KEA 1T	Climb on RADIAL 033 SPA. At RADIAL 033 SPA / 12 DME Fix turn right proceed to KEA and then as directed by ATC.	210 KT/20° until turn at RADIAL 033 SPA/12 DME Fix is completed.	5,0% (304 FT/NM) up to 3000FT (QNH) then 3,6% (219 FT/NM) up to 10000FT (QNH).	Cross R 033 SPA/12 DME Fix at 3000FT (QNH) or above. Cross KEA at 10000FT (QNH) or above.
VELOP 1T	Climb on RADIAL 033 SPA. At RADIAL 033 SPA / 12 DME Fix turn right and proceed to ATV. After ATV turn left, intercept and follow R 205 ATV, proceed to VELOP and join AWY B1.	210 KT/15° until turn at RADIAL 033 SPA/12 DME Fix is completed.	5,0% (304 FT/NM) up to 3000FT (QNH).	Cross R 033 SPA/12 DME Fix at 3000FT (QNH) or above. Cross ATV at 6000FT (QNH) or above. Cross VELOP at 9000FT (QNH) or above.
ASTOV 1T	Climb on RADIAL 033 SPA. At RADIAL 033 SPA / 12 DME Fix turn right and proceed to ATV. After ATV intercept and follow R 242 ATV, proceed to ASTOV and join AWY J61.	210 KT/15° until turn at RADIAL 033 SPA/12 DME Fix is completed.	5,0% (304 FT/NM) up to 3000FT (QNH).	Cross R 033 SPA/12 DME Fix at 3000FT (QNH) or above. Cross ATV at 6000FT (QNH) or above. Cross ASTOV at 9000FT (QNH) or above.
NEMES 1T	Climb on RADIAL 033 SPA. At RADIAL 033 SPA / 12 DME Fix turn right and proceed to ATV. After ATV intercept and follow R 256 ATV, proceed to NEMES and join AWY B34.	210 KT/15° until turn at RADIAL 033 SPA/12 DME Fix is completed.	5,0% (304 FT/NM) up to 3000FT (QNH).	Cross R 033 SPA/12 DME Fix at 3000FT (QNH) or above. Cross ATV at 6000FT (QNH) or above. Cross NEMES at 10000FT (QNH) or above.
RILIN 1T	Climb on RADIAL 033 SPA. At RADIAL 033 SPA / 12 DME Fix turn right and proceed to ATV. After ATV intercept and follow R 271 ATV, proceed to RILIN and join AWY N604.	210 KT/15° until turn at RADIAL 033 SPA/12 DME Fix is completed. 230 KT/25° until turn at ATV is completed.	5,0% (304 FT/NM) up to 3000FT (QNH).	Cross R 033 SPA/12 DME Fix at 3000FT (QNH) or above. Cross ATV at 6000FT (QNH) or above. Cross R 271 ATV /26 DME Fix at 7000FT (QNH) or above. Cross RILIN at 10000FT (QNH) or above.
PIKAD 1T	Climb on RADIAL 033 SPA. At RADIAL 033 SPA / 12 DME Fix turn right and proceed to ATV. After ATV turn right, intercept and follow R 277 ATV, proceed to PIKAD and join AWY L53.	210 KT/15° until turn at RADIAL 033 SPA/12 DME Fix is completed. 230 KT/25° until turn at ATV is completed.	5,0% (304 FT/NM) up to 3000FT (QNH).	Cross R 033 SPA/12 DME Fix at 3000FT (QNH) or above. Cross ATV at 6000FT (QNH) or above. Cross R 277 ATV /26 DME Fix at 7000FT (QNH) or above. Cross PIKAD at 9000FT (QNH) or above.
RIMAX 1T	Climb on RADIAL 033 SPA. At RADIAL 033 SPA / 12 DME Fix turn right and proceed to ATV. After ATV turn right, intercept and follow R 281 ATV, proceed to RIMAX and join AWY L613.	210 KT/15° until turn at RADIAL 033 SPA/12 DME Fix is completed. 230 KT/25° until turn at ATV is completed.	5,0% (304 FT/NM) up to 3000FT (QNH).	Cross R 033 SPA/12 DME Fix at 3000FT (QNH) or above. Cross ATV at 6000FT (QNH) or above. Cross R 281 ATV /26 DME Fix at 7000FT (QNH) or above. Cross RIMAX at 12000FT (QNH) or above.
GERMI 1T	Climb on RADIAL 033 SPA. At RADIAL 033 SPA / 12 DME Fix turn right and proceed to ATV. After ATV turn right, intercept and follow R 293 ATV, proceed to GERMI and join AWY R19 or L995.	210 KT/15° until turn at RADIAL 033 SPA/12 DME Fix is completed. 230 KT/25° until turn at ATV is completed.	5,0% (304 FT/NM) up to 3000FT (QNH).	Cross R 033 SPA/12 DME Fix at 3000FT (QNH) or above. Cross ATV at 6000FT (QNH) or above. Cross R 293 ATV /20 DME Fix at 7000FT (QNH) or above. Cross GERMI at 10000FT (QNH) or above.
ABLON 1T	Climb on RADIAL 033 SPA. At RADIAL 033 SPA / 12 DME Fix turn right and proceed to ATV. After ATV turn right to track 030°, intercept and follow R 345 ATV, proceed to ABLON and join AWY B1.	210 KT/15° until turn at RADIAL 033 SPA/12 DME Fix is completed. 230 KT/25° until turn at ATV is completed.	5,0% (304 FT/NM) up to 3000FT (QNH).	Cross R 033 SPA/12 DME Fix at 3000FT (QNH) or above. Cross ATV at 7000FT (QNH) or above. Cross ABLON at 10000FT (QNH) or above.
ATV 1T	Climb on RADIAL 033 SPA. At RADIAL 033 SPA / 12 DME Fix turn right, proceed to ATV and then as directed by ATC.	210 KT/15° until turn at RADIAL 033 SPA/12 DME Fix is completed.	5,4% (328 FT/NM) up to 12000FT (QNH).	Cross ATV at 12000FT (QNH) or above.

PDG	GS (KT)	100	120	140	160	180	200	220	240	260	280
3,9% (237 FT/NM)	ROC (FT/NM)	395	474	553	632	711	790	869	948	1027	1106
5,0% (304 FT/NM)	ROC (FT/NM)	507	608	710	811	913	1014	1115	1217	1318	1420
5,4% (328 FT/NM)	ROC (FT/NM)	547	656	766	875	985	1094	1203	1313	1422	1532
6,4% (389 FT/NM)	ROC (FT/NM)	648	778	908	1037	1167	1297	1426	1556	1686	1815